



REGULATORY AGENCY APPROVALS



E93779



LR89403

Manufactured to meet the requirements of ANSI/IEEE C57.13.
Classified by U.L. in accordance with IEC 44-2



No Fuse

FREQUENCY:

50 Hz.

**STANDARD
SECONDARY VOLTAGE:**

110 Volts

INSULATION LEVEL:

0.72kV

ACCURACY CLASS:

0.2 @ 40VA

0.5 @ 70VA

THERMAL RATING:

550VA at 30°C. amb., 350VA at 55°C. amb.

The primary and secondary terminals are ASA 10-32 screws into 9.6mm deep brass inserts and fitted with one lockwasher and flatwasher and are contained in a sealable terminal cover.

Approximate weight 11.4 kg



1 Fuse



2 Fuses



Clear Plastic Cover

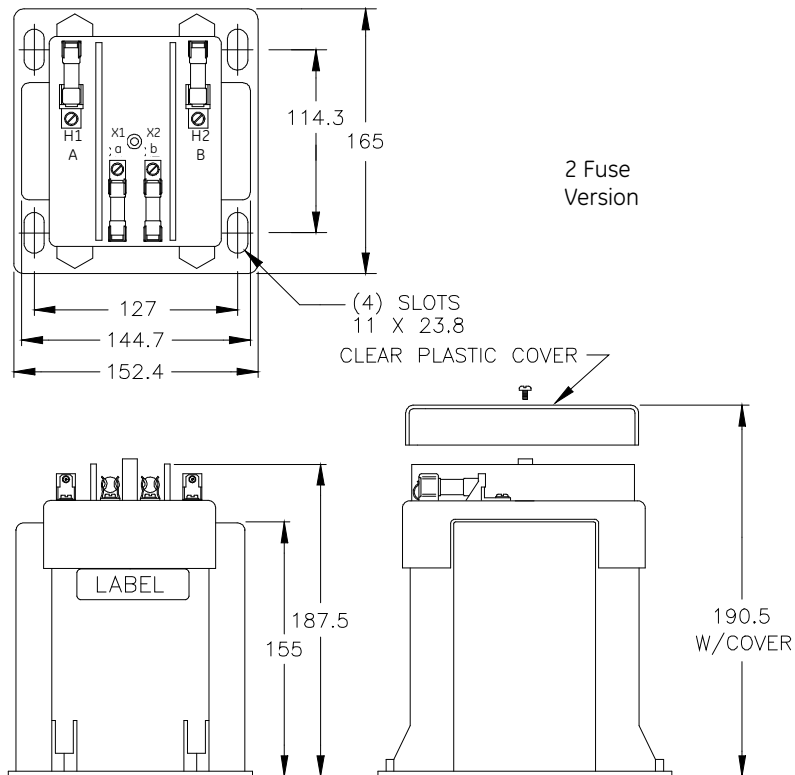
Retro Fit Fuse Kit Order No. 0222 PL 7019

CATALOG NUMBER			VOLTAGE RATING	TURNS RATIO	REC. PRIMARY FUSE RATING
NOT FUSED	PRIMARY FUSES ONLY	PRIMARY AND SECONDARY FUSES			
450I-110	450I-110F	450I-110FF	110:110	1:1	10 amp.
450I-220	450I-220F	450I-220FF	220:110	2:1	6 amp.
450I-380	450I-380F	450I-380FF	380:110	3.45:1	3 amp.
450I-400	450I-400F	450I-400FF	400:110	3.64:1	3 amp.
450I-416	450I-416F	450I-416FF	416:110	3.78:1	3 amp.
450I-440	450I-440F	450I-440FF	440:110	4:1	3 amp.

Above part numbers are available with 100 volt secondaries.

Model 450I

- The core and coil assembly is encased in a thermoplastic shell and filled with resin.
- These transformers are designed for operation line-to-line. They may also be operated line-to-ground or line-to-neutral at reduced voltage, (58% of rated volts).
- It is desirable to use a 6.0 amp BBS type or equal fuse in the secondary to protect the transformer.
- When primary fuses are requested, the rating will be as given in the table.
- When only one fuse is used, it must be connected into the line side (P1) terminal wiring. This will prevent the presence of voltage at the P1 terminal for a ruptured fuse in the neutral (P2) terminal wiring for line-to-neutral connected transformers.



Dimensions in millimeters.

USA, Canada, Asia, Latin America

Tel: +1-800-547-8629

Fax: +1-905-201-2455

e-mail: sales.multilin@ge.com

Europe, Middle East, Africa

Tel: +34-94-485-88-00

Fax: +34-94-485-88-45

e-mail: gemultilin.euro@ge.com

Please refer to our website www.GEMultilin.com for more detailed contact information

CS00A40631 Rev. 2 2/11