



REGULATORY AGENCY APPROVALS



E93779



LR89403

Manufactured to meet the requirements of ANSI/IEEE C57.13.  
Classified by U.L. in accordance with IEC 44-2



**FREQUENCY:**

50 Hz.

**STANDARD  
SECONDARY VOLTAGE:**

110 Volts

**INSULATION LEVEL:**

0.72kV

**ACCURACY CLASS:**

0.5 @ 10VA.

1.0 @ 20VA.

**THERMAL RATING:**

125VA at 30°C. amb., 75VA at 55°C. amb.

Terminals are brass studs ASA 10-32 with one lockwasher, flatwasher and regular nut.

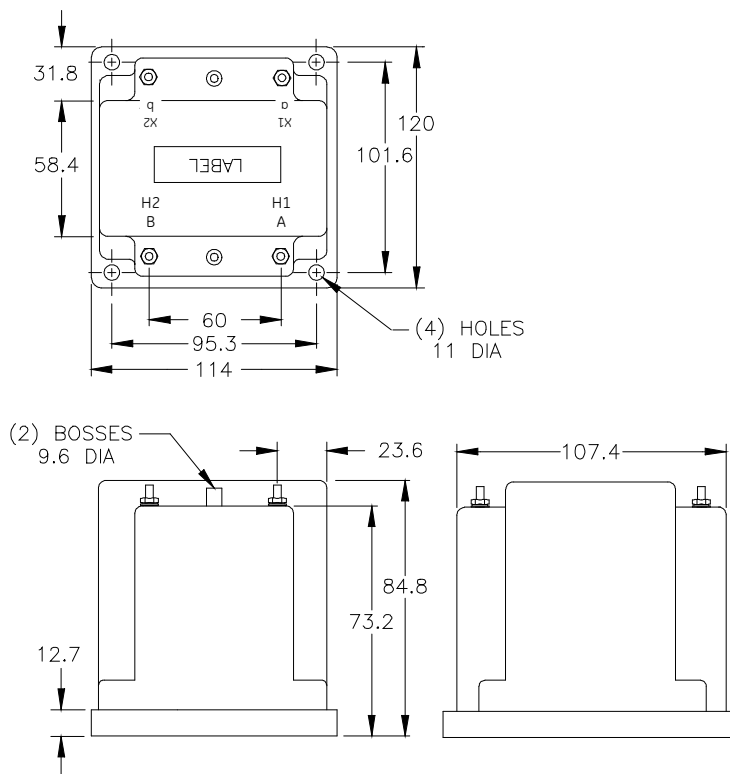
Approximate weight 3.5 kg

CATALOG NUMBER	VOLTAGE RATIO	TURNS RATIO	REC. PRIMARY FUSE RATING
460I-110	110:110	1:1	3 amp.
460I-220	220:110	2:1	2 amp.
460I-380	380:110	3.45:1	1 amp
460I-400	400:110	3.64:1	1 amp
460I-416	416:110	3.78:1	1 amp
460I-440	440:110	4:1	1 amp

Above part numbers are available with 100 volt secondaries.

# Model 460I

- The core and coil assembly is encased in a thermoplastic shell and filled with resin.
- These transformers are designed for operation line-to-line. They may also be operated line-to-ground or line-to-neutral at reduced voltage, (58% of rated volts).
- It is desirable to use a 1.75 amp fuse in the secondary to protect the transformer.
- Terminal covers available upon request.



Dimensions in millimeters.

**USA, Canada, Asia, Latin America**

Tel: +1-800-547-8629

Fax: +1-905-201-2455

e-mail: [sales.multilin@ge.com](mailto:sales.multilin@ge.com)

**Europe, Middle East, Africa**

Tel: +34-94-485-88-00

Fax: +34-94-485-88-45

e-mail: [gmultilin.euro@ge.com](mailto:gmultilin.euro@ge.com)

Please refer to our website [www.GEMultilin.com](http://www.GEMultilin.com) for more detailed contact information

CS00A40633 Rev. 2 2/11