



Current Transformer Models 600 & 601 Split Core

Window Sizes 2.00" x 5.50", 4.50"x 4.50"

REGULATORY AGENCY APPROVALS

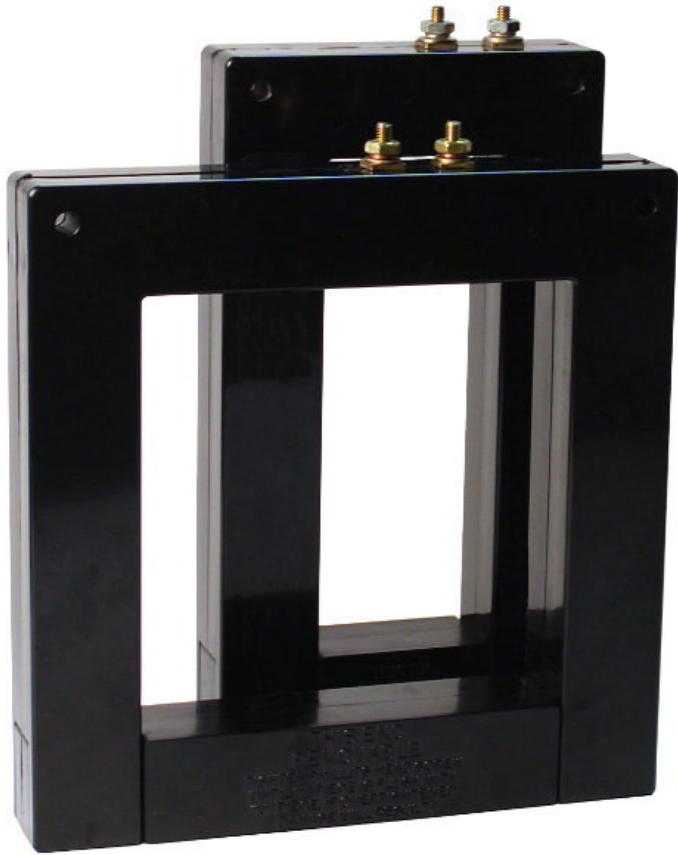


E93779



LR89403

Manufactured to meet the requirements of ANSI/IEEE C57.13.
Classified by U.L. in accordance with IEC 44-1



APPLICATION:

For energy management systems and instrumentation.

FREQUENCY:

50-400 Hz.

INSULATION LEVEL:

0.6 kV, BIL 10 kV full wave.

**CONTINUOUS THERMAL
CURRENT RATING FACTOR:**

1.33 at 30°C. amb.

1.0 at 55°C. amb.

Terminals are 8-32 brass studs with one flatwasher, lockwasher, and regular nut.

Flexible leads UL 1015, 105°C, CSA approved, #16 AWG, 24" long are available.

Approximate Weight 1.5 lbs.

5

CATALOG NUMBER	CURRENT RATIO	V.A. ± 1% CLASS	ANSI METERING CLASS AT 60HZ			CATALOG NUMBER	CURRENT RATIO	V.A. ± 1% CLASS	ANSI METERING CLASS AT 60HZ		
			BO.1	BO.2	BO.5				BO.1	BO.2	BO.5
600-401	400:5	1.5	2.4	4.8	—	601-401	400:5	1.0	4.8	—	—
600-501	500:5	2.0	2.4	4.8	—	601-501	500:5	1.5	4.8	4.8	—
600-601	600:5	2.5	2.4	2.4	—	601-601	600:5	2.0	2.4	4.8	—
600-801	800:5	5.0	1.2	1.2	2.4	601-801	800:5	2.5	1.2	2.4	4.8
600-102	1000:5	7.5	1.2	1.2	2.4	601-102	1000:5	5.0	1.2	1.2	4.8
600-122	1200:5	15.0	0.6	1.2	1.2	601-122	1200:5	10.0	1.2	1.2	2.4
600-152	1500:5	20.0	0.6	0.6	1.2	601-152	1500:5	15.0	1.2	1.2	1.2
600-162	1600:5	20.0	0.6	0.6	1.2	601-162	1600:5	15.0	1.2	1.2	1.2
600-202	2000:5	30.0	0.6	0.6	0.6	601-202	2000:5	20.0	0.6	0.6	1.2

Model 600 & 601 Split Core

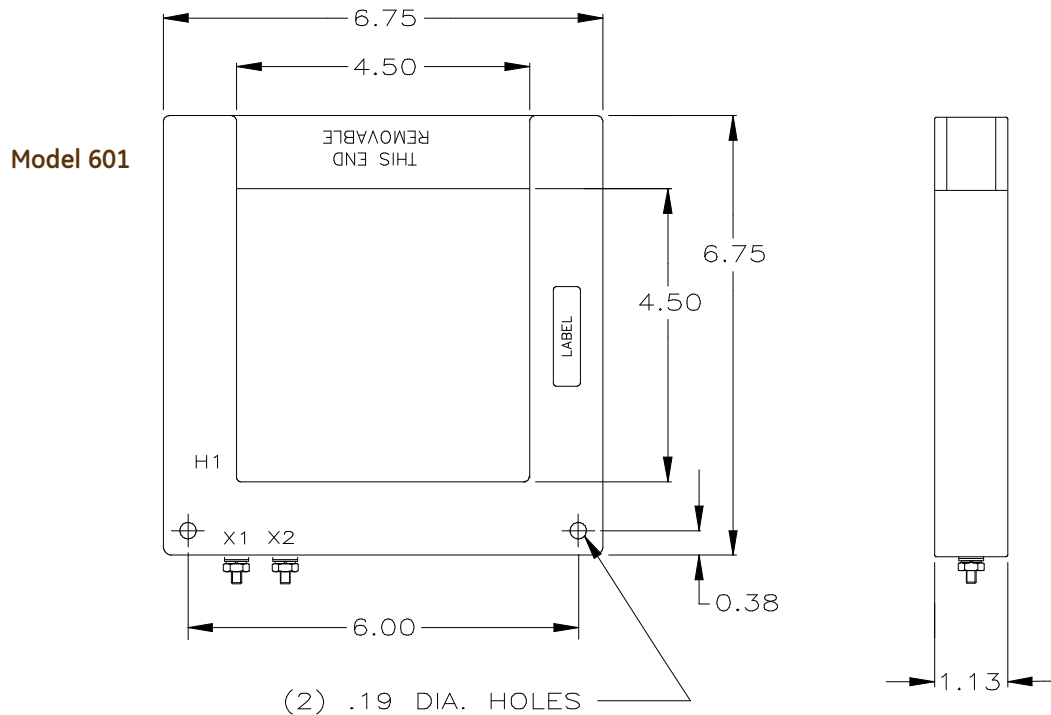
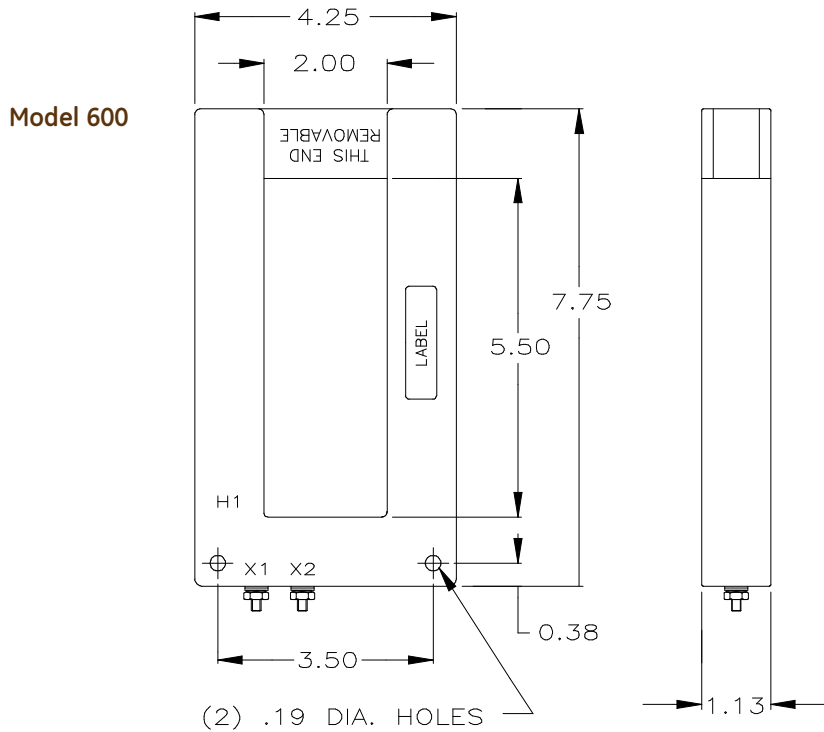
These transformers are designed for assembly to an existing electrical installation without the need for dismantling the primary bus or cables.

Caution:

Proper safety precautions must be followed during installation by a trained electrician. Never install while bus is energized.

The current transformer must have its secondary terminals short circuited or the burden connected, before energizing the primary circuit.

5



USA, Canada, Asia, Latin America

Tel: +1-800-547-8629

Fax: +1-905-201-2455

e-mail: sales.multilin@ge.com

Europe, Middle East, Africa

Tel: +34-94-485-88-00

Fax: +34-94-485-88-45

e-mail: gemultilin.euro@ge.com