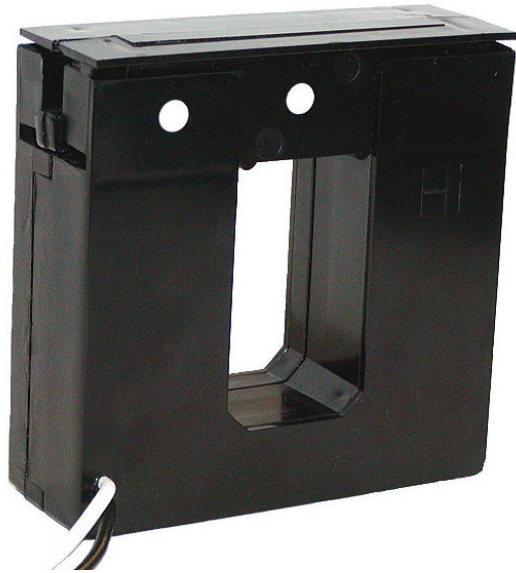




REGULATORY AGENCY APPROVALS



**APPLICATION:**

For energy management systems and instrumentation equipment.

**FREQUENCY:**

50-400 Hz.

**INSULATION LEVEL:**

0.6 kV, BIL 10 kV full wave.

**CONSTRUCTION:**

The core and winding are encased in U.L. approved plastic.

**CONTINUOUS THERMAL  
CURRENT RATING FACTOR:**

1.33 at 30°C. amb., 1.0 at 55°C. amb.

Flexible leads UL 1015, 105°C, #16 AWG, 36" long unless otherwise specified.

Approximate Weight 1.2 lbs.

CATALOG NUMBER	CURRENT RATIO	BURDEN	ACCURACY AT 60 HZ
616-201	200:5	2VA	3 %
616-401	400:5	5VA	1 %
616-601	600:5	5VA	1 %
616-801	800:5	5VA	1 %
616-201-1	200:1	1.5VA	1 %
616-401-1	400:1	5VA	1 %
616-601-1	600:1	5VA	1 %
616-801-1	800:1	5VA	1 %
616-201-0.1	200:0.1	5 ohms	1 %
616-401-0.1	400:0.1	5 ohms	1 %
616-601-0.1	600:0.1	5 ohms	1 %
616-801-0.1	800:0.1	5 ohms	1 %

# Model 616 Split Core/Clamp On

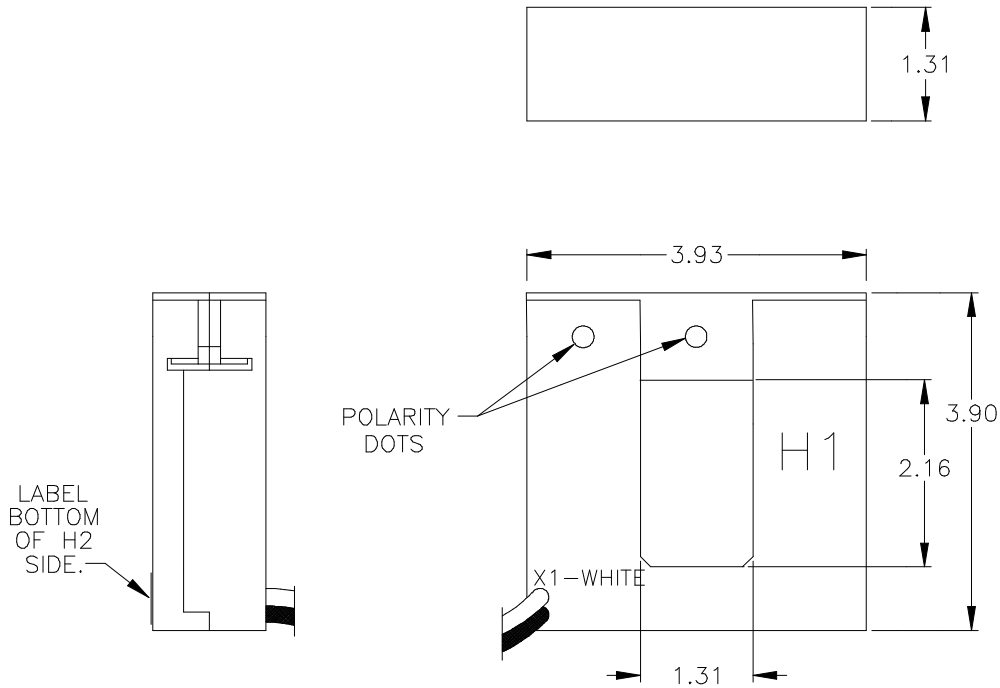
This transformer is designed for assembly to an existing electrical installation without the need for dismantling the primary bus or cables.

**Caution:**

Proper safety precautions must be followed during installation by a trained electrician. Never install while bus is energized.

The current transformer must have its secondary terminals short circuited or the burden connected, before energizing the primary circuit.

5



**USA, Canada, Asia, Latin America**

Tel: +1-800-547-8629

Fax: +1-905-201-2455

e-mail: [sales.multilin@ge.com](mailto:sales.multilin@ge.com)

**Europe, Middle East, Africa**

Tel: +34-94-485-88-00

Fax: +34-94-485-88-45

e-mail: [gemultilin.euro@ge.com](mailto:gemultilin.euro@ge.com)