



Ground Fault Current Detection Systems

Model GFM (Relay) 2.0 to 65 Amp Trip Currents

ADJUSTABLE OPERATING RANGE:

Trip currents from 1.5 to 65 Amperes.
Time delay from instantaneous to 36 cycles.

INPUT POWER: Self powered.

FREQUENCY: 50/60 Hz.

AMBIENT TEMPERATURE RANGE:

-30°C to +60°C
Positive "ON" (Green)
and "OFF" (Red) condition
indication, manual reset.

SPDT contacts:

Form C, rated 10 Amps
continuous, 23 Amps inrush,
250 volts ac.

Only for use with GFM sensors.



Model GFM - 252 & Model 262



110395



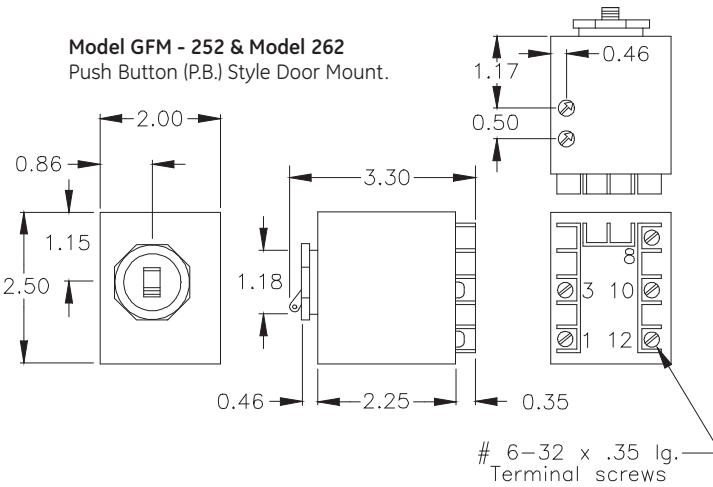
LR80793



Model GFM - 353, 363, 453, and 463

- The class 1 model GFM Ground Fault protection systems are designed to minimize damage or loss to equipment caused by destructive arcing ground faults. This GFM systems is designed for all polyphase applications and is ideally suited for motor control, motor control centers, and high voltage starters. System can be wye or delta, ground or resistance grounded. When the ground fault current exceed a pre-selected condition (current and time setting) the relay trips.

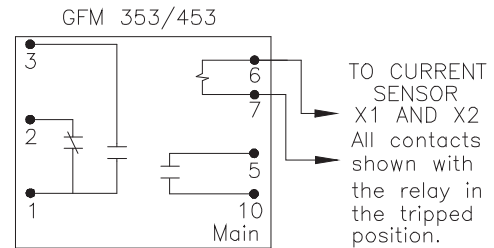
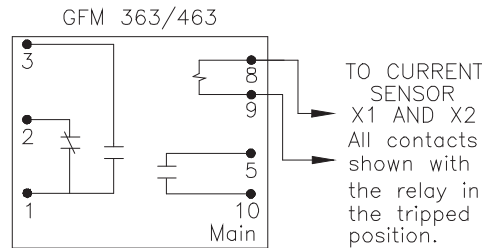
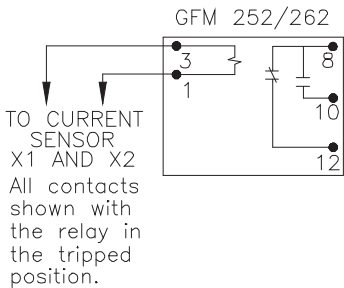
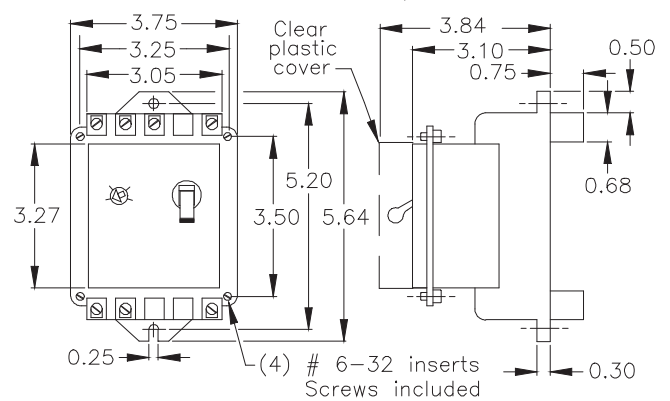
The relay contacts can be connected in the control circuit of a motor starter, to the shunt trip of a circuit breaker or similar disconnecting or alarm devices. The system has an inverse time characteristic to prevent nuisance tripping. The relay tripping current value is field adjustable over the trip current range of the sensor. The adjustable trip time delay relay is field settable up 36 cycle.



Model GFM - 353, 363, 453, and 463

Rear terminal kit and clear plastic cover standard with door mounting.

Main contact rated 30 Amps, 277 Volts.



HOW TO ORDER RELAYS

GFM - X X X

CASE STYLE	WEIGHT
2- P.B Style-Door mtg.	6 oz.
3- Panel mount	14 oz.
4- Door mount	16 oz.

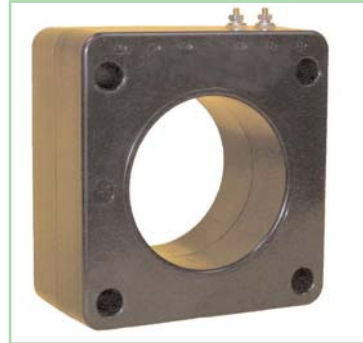
TIME DELAY
5- Instantaneous
6- Adjustable time delay, up to 36 36 cycles.

OUTPUT CONTACTS
2- 10A form C contacts (case style 2 only)
3- 10A form C contacts plus 30A N.O. contacts. (on case styles 3 & 4 only)

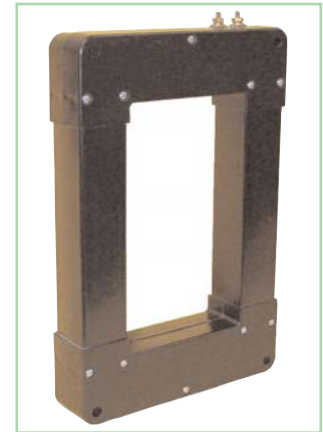
Ground Fault

Model GFM (Sensor)

2.0 to 65 Amp Trip Currents



TOROIDAL SENSORS



RECTANGULAR SENSORS

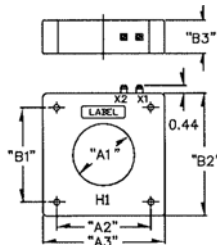
OPERATING RANGE:
Trip currents from
20 - 85 to 15 - 65 Amperes.

INSULATION LEVEL:
600 Volt, 10 kV BIL full wave.
Terminals are brass studs No. 8-32.

FREQUENCY: 50/60 Hz.

Only for use with GFM relays.

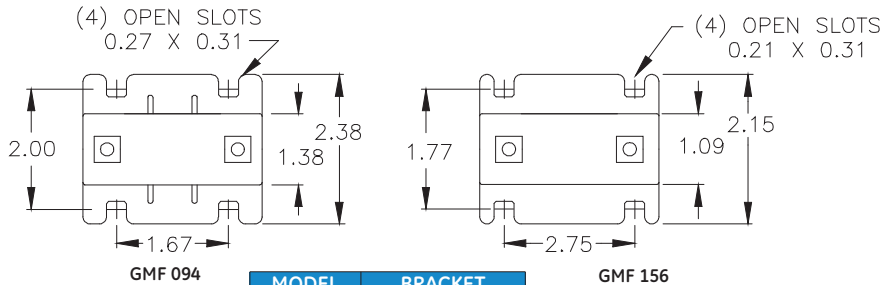
- Ground Fault Current Sensors type **GFM**, are available in three different case styles, a variety of sizes and trip current ranges - to match the **GFM** Relay. The physical size of the sensor window should be carefully determined by the physical size and configuration of the power conductors. The Ground Fault Sensor will respond only to ground faults which occur between the position of the sensor and the load.



MODEL NUMBER	TRIP CURRENT	SENSOR DIMENSIONS					
		"A1"	"A2"	"A3"	"B1"	"B2"	"B3"
GFM 094	2.0 TO 8.5	0.94	N/A	2.67	N/A	2.75	2.38
GFM 125	2.7 TO 14	1.25	N/A	2.67	N/A	2.75	2.38
GFM 156	4.5 TO 18	1.56	N/A	3.53	N/A	3.77	2.15
GFM 200	3.5 TO 14.5	2.00	3.19	4.00	N/A	4.00	1.75
GFM 250	3.5 TO 11	2.50	3.75	4.63	N/A	5.10	3.00
GFM 350	4 TO 12	3.75	4.75	5.96	4.75	6.31	3.00
GFM 375D	*	3.75	4.75	5.96	4.75	6.31	3.00
GFM 425	5 TO 18	4.25	5.44	6.73	5.43	6.73	1.28
GFM 462	4 TO 12	4.62	5.75	7.00	5.75	7.12	4.00
GFM 813	4 TO 12	8.13	8.50	11.10	8.50	11.47	3.00

*Dual trip current ranges 3.5 to 11 and 10 to 36.

Mounting bracket kits are available for all toroidal sensors except the Model GFM 094, GFM 125, and GFM 156, which have molded mounting feet.



MODEL NUMBER	BRACKET KIT
GFM 200	0221B01976
GFM 250	0221B00541
GFM 375	0221B00259
GFM 375D	0221B00259
GFM 425	0221B00187
GFM 462	0221B01525
GFM 813	0221B00259

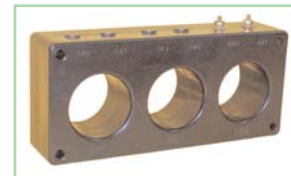
USA, Canada, Asia, Latin America
Tel: +1-800-547-8629
Fax: +1-905-201-2455
e-mail: sales.multilin@ge.com

MODEL NUMBER	TRIP CURRENT	SENSOR DIMENSIONS					
		"A1"	"A2"	"A3"	"B1"	"B2"	"B3"
GFM 041 X 071	6 TO 30	4.1	6.4	7.3	7.1	10.0	10.9
* GFM 080 X 117SC	15 TO 65	8.0	9.5	11.1	11.7	14.5	15.4
GFM 080 X 141	9 TO 39	8.0	9.5	11.1	14.1	17.0	17.9

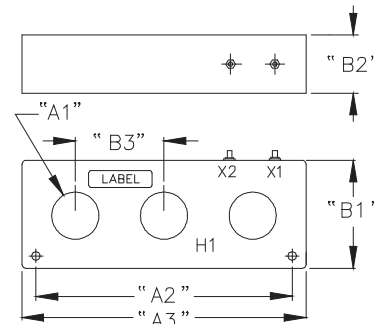
* Model **GFM 080 X 117SC** is split core (take-apart style) for assembly to existing electrical installations without the need for dismantling the primary bus or cables.

CAUTION:

Proper safety precautions must be followed during installation by a trained electrician. It is recommended that the incoming power de-energized before installation. The sensor must have its secondary terminals short circuited or the relay connected, before energizing the primary circuit.



3 HOLE SENSORS



MODEL NUMBER	TRIP CURRENT	SENSOR DIMENSIONS					
		"A1"	"A2"	"A3"	"B1"	"B2"	"B3"
GFM 3P205 X 050	4.5 TO 16	*	7.60	8.50	3.70	2.00	2.75
GFM 3P208	5 TO 20	2.08	8.24	9.00	3.94	2.00	2.75
GFM 3P212	7 TO 25	2.12	11.72	12.80	4.87	2.63	4.00

* The Model **GFM 3P205 X 050** has a rectangle window 2.05" X 0.50".

Europe, Middle East, Africa
Tel: +34-94-485-88-00
Fax: +34-94-485-88-45
e-mail: gemultilin.euro@ge.com