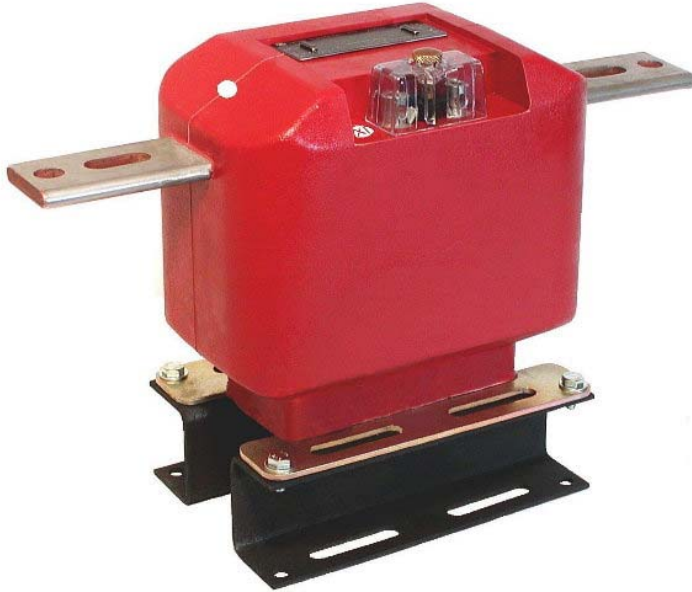




Indoor Current Transformer, Wound Primary Model JKM-4C 8.7kV, 75kV BIL, 5-800A



REGULATORY AGENCY APPROVALS



Manufactured to meet the requirements of ANSI/IEEE C57.13.

APPLICATION

Designed for indoor service; Suitable for operating meters, instruments and control devices.

WEIGHT

(Approximate)42 lbs

REFERENCE DRAWINGS

Outline0163C34461

INSULATION LEVEL

8.7kV; BIL 75kV full wave

FREQUENCY

50-60 Hz

JKM-4C DATA TABLE

Current Ratio (Amps) Pri : Sec	ANSI Accuracy Class, 60 Hz		Continuous Thermal Current Rating Factor		Primary Bar Size		One Second Thermal Limit, Amps	Mech. Limit Amps	Catalog Number	
	B0.1 to B1.8	Relay Class	@ 30° C Amb.	@ 55° C Amb.	Width ins.	Thick ins.			Transformer Only	With Base Extension
5:5	0.3	T100	1.5	1.0	1.50	0.188	465	550	754X140001	754X140019
10:5	0.3	T100	1.5	1.0	1.50	0.188	930	1100	754X140002	754X140020
15:5	0.3	T100	1.5	1.0	1.50	0.188	1470	1650	754X140003	754X140021
20:5	0.3	T100	1.5	1.0	1.50	0.188	1850	2200	754X140004	754X140022
25:5	0.3	T100	1.5	1.0	1.50	0.188	2300	2750	754X140005	754X140023
30:5	0.3	T100	1.5	1.0	1.50	0.188	2450	3300	754X140006	754X140024
40:5	0.3	T100	1.5	1.0	1.50	0.188	3700	4400	754X140007	754X140025
50:5	0.3	T100	1.5	1.0	1.50	0.188	4600	5500	754X140008	754X140026
75:5	0.3	T100	1.5	1.0	1.50	0.188	6400	8250	754X140009	754X140027
100:5	0.3	T100	1.5	1.0	1.50	0.188	8600	11000	754X140010	754X140028
150:5	0.3	T100	1.5	1.0	1.50	0.188	12800	16500	754X140011	754X140029
200:5	0.3	T100	1.5	1.0	2.00	0.25	17300	22000	754X140012	754X140030
300:5	0.3	T100	1.5	1.0	2.00	0.25	25700	33000	754X140014	754X140032
400:5	0.3	T100	1.5	1.0	2.00	0.25	36000	44000	754X140015	754X140033
500:5	0.3	T100	1.33	1.0	2.00	0.38	43100	47000	754X140016	754X140034
600:5	0.3	T100	1.5	1.0	2.00	0.38	51500	66000	754X140017	754X140035
800:5	0.3	T100	1.33	1.0	2.00	0.38	63300	70500	754X140018	754X140036

Construction and Insulation

The core and coil assembly is encapsulated in vacuum cast polyurethane resin. This tough material has excellent electrical and mechanical properties over a wide temperature range, has low water absorption and is resistant to oil and a variety of chemicals.

Core and Coils

The core is made from high quality grain oriented silicon steel, annealed under rigidly controlled factory conditions. The primary winding consists of two coils in series, one around each leg of the core. This construction minimizes flux leakage thus improving the accuracy of the transformer. The secondary winding consists of two coils in parallel. Each coil is located inside the corresponding primary coil and surrounds one leg of the core.

Terminals

Secondary terminals are tin plated brass, compression type with a 0.275" diameter cross-hole for wiring and a 1/4-28 clamp screw. A shorting device is provided and interlocked to the terminal cover. The terminal cover is made of a clear plastic. Provision is made for sealing the cover.

Primary Bars

The primary terminals are tin plated copper bars molded into the cast resin insulation. They have one hole and one slot at each end, suitable for 1/2" bolts.

Polarity

The primary and secondary polarity markers H1, X1, are molded in the insulation. They are thus permanent and integral parts of the transformer and cannot be readily obliterated. They are also marked white.

Nameplates

The nameplate is laser engraved aluminum. It is attached to the top of the unit and has provision for attaching the user's identifying tag. The nominal current rating is marked on the side of the unit in large numerals.

Base plate and Mounting

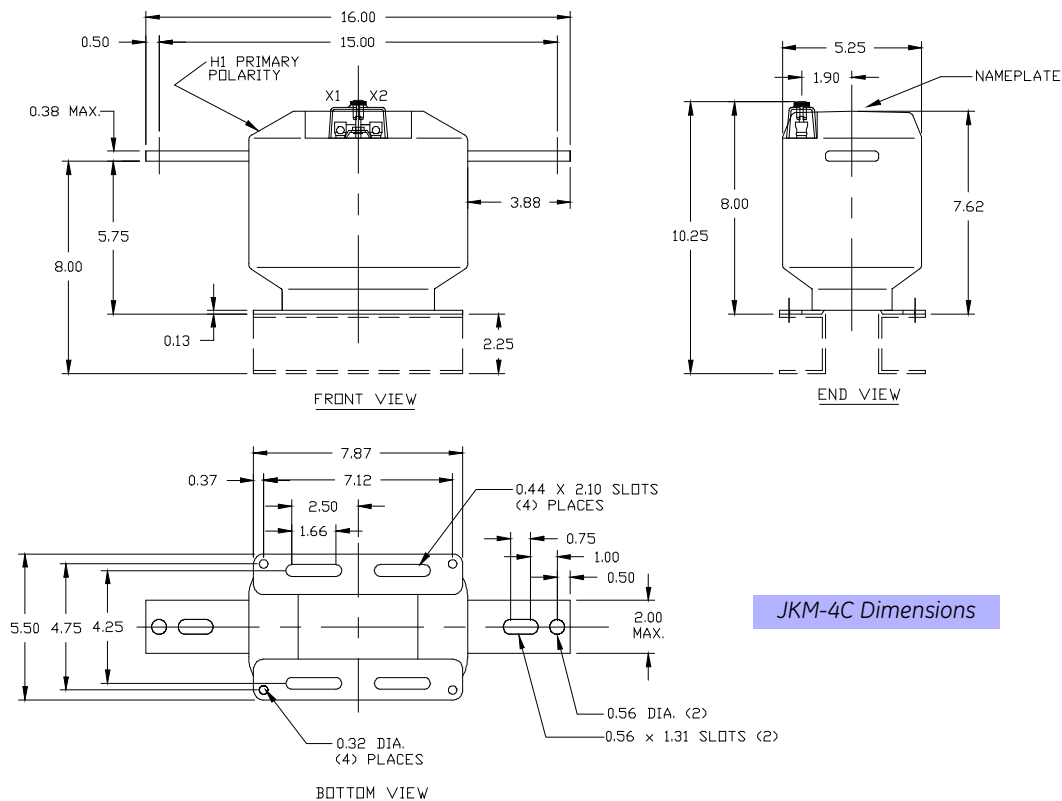
The base plate is made of stainless steel; it is provided with four slots for mounting. The transformer may be mounted in any orientation. A base extension is available which raises the transformer, bringing the primary terminals to the height recommended in industry standards for 8,700 volt metering current transformers.

Maintenance

These transformers require no maintenance, other than occasional cleaning, if installed where air contamination is severe.

Data subject to change without notice

To purchase or obtain more information about GE Instrument Transformer products, please call GE Multilin at 1-800-547-8629. Product information is also available on our web site at <http://www.GEMultilin.com>. Click on the Product Index button (right column), select Transformers and follow the menus to **Product Information** or a **Solutions Advisor**.



JKM-4C Dimensions

USA, Canada, Asia, Latin America

Tel: +1-800-547-8629

Fax: +1-905-201-2455

e-mail: sales.multilin@ge.com

Europe, Middle East, Africa

Tel: +34-94-485-88-00

Fax: +34-94-485-88-45

e-mail: gmultilin.euro@ge.com